



Original information compiled from RP216216 in the Department of Natural Resources and Mines, Manufacturing and Regional and Rural Development.

**Area of New Road**

(6-28-31-34a-24-23-33-33b-33c-33d-33e-34-15-35-10a-10-13-45-46-7-6) ..... **9504 m<sup>2</sup>**  
 (38-45-46-47-38) ..... **24 m<sup>2</sup>**  
 (2-3-1-3a-2a-2) ..... **1047 m<sup>2</sup>**  
**Total..... 1.058 ha**

For Details of Lots 1, 2, 37-40 & Emts S & T, see Sheet 3.

For Details of Lots 31-36 & Emts O-R, see Sheet 4.

For Details of Lots 3-6 & Emt K, see Sheet 5.

For Details of Lots 7-10 & Emts L-N, see Sheet 6.

For Details of Emts J, U & V, see Sheet 7.

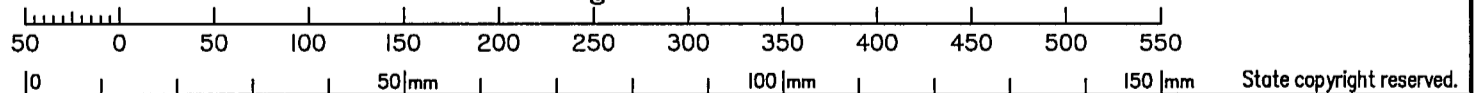
For Reference Marks Table, Permanent Marks Table & MGA Co-ordinates Table, see Sheet 8.

Peg placed at all new corners, unless stated otherwise.

For Survey Report, see Sheet 2.

See Sheets 3-7 for Easement details & descriptions within Subject Lots.

Scale 1:4000 - Lengths are in metres.



I, Ian Kingsley SMITH, hereby certify that the land comprised in this plan was surveyed by Clinton Andrew CARSELDINE, Registered Surveyor, for whose work I accept responsibility and that the plan is accurate, that the said survey was performed in accordance with the Survey and Mapping Infrastructure Act 2003 and Surveyors Act 2003 and associated Regulations and Standards and that the said survey was completed on 31/10/2025.

*9-1-5-#*

..... Cadastral Surveyor

Date **4-11-25**

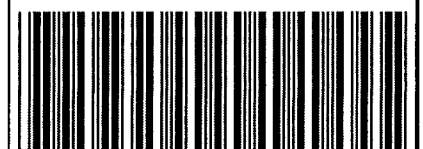
**Plan of Lots 1-10, 31-40, 100 & Emts J & K in Lot 5, Emts L-N in Lots 7-9 Respectively, Emt O in Lot 33, Emts P & Q in Lot 34, Emt R in Lot 36, Emt S in Lot 38, Emt T in Lot 39 & Emts U & V in Lot 100**

*Cancelling Lot 1 on RP216216*

LOCAL GOVERNMENT: **GYMPIE REGIONAL COUNCIL** LOCALITY: **PIE CREEK**  
 Meridian: **MGA Zone 56 vide CORS** Survey Records: **No**

Scale: **1:4000**

Format: **STANDARD**



**SP355662**

**WARNING : Folded or Mutilated Plans will not be accepted.**  
**Plans may be rolled.**  
**Information may not be placed in the outer margins.**

(Dealing No.)

4. Lodged by

(Include address, phone number, email, reference, and Lodger Code)

| I. Existing     |                   | Created           |        |                     |
|-----------------|-------------------|-------------------|--------|---------------------|
| Title Reference | Description       | New Lots          | Road   | Secondary Interests |
| 17132010        | Lot 1 on RP216216 | 1-10, 31-40 & 100 | New Rd | Emts J-V            |

**ENCUMBRANCE EASEMENT ALLOCATIONS**

| Easement                           | Lots to be Encumbered |
|------------------------------------|-----------------------|
| 602083860 (Emts B & C on RP216216) | 100                   |
| 602123804 (Emts B & C on RP216216) | 100                   |

**Survey Report**

- Main Plans Used – IS330671, IS337922, MPH5473, MPH32344, MPH34225, RP74559, RP216216, RP809062, SP262230, SP321728, SP323059 and SP355662.
- Datum – Southern boundary line 11-16-18-19 was fixed at its extents by OPs and OIPs measuring with Deed distance agreement throughout. Deed distance road width was confirmed between fixed Stations 11 and 16 and Station 18 was reinstated by maintaining Deed distance between fixed Stations 16 and 19.
- Line 10a-16 was fixed well at its extents and measured with a small excess of +0.034 when compared to subject plan RP216216. The overall measurement of 245.68 agreed with that as measured on our firm's recent plan SP321728. A variation of 0°01'20" was confirmed in the internal angle at Station 16 when compared to original.
- The unnamed road frontage line 8-10a was well fixed at its extents and measured with an excess of +0.091. This line measured in agreement with SP321728 previously completed by our firm.
- Hinkler Place and unnamed Road frontage line 2-8 was also well fixed at its extents by reference marks. This line measured with a shortage of 0.09 when compared to subject SP216216. Surveyed connection lines 6-6a and 2-1a were measured, and this confirmed the preservation of Deed road width of 20.117m off fixed Stations 6a and 1a. A very minor variation of 10" was confirmed in the internal angle at Station 8 when compared to original.
- All new internal boundaries were then surveyed and intersected onto the reinstated perimeter boundaries explained above.
- All lots, easements and new road sections then closed within the prescribed limits.

*Emt B on RP216216 is partially extinguished by new road.*

**6. Building Format Plans only.**

I certify that :  
 \* As far as it is practical to determine, no part of the building shown on this plan encroaches onto adjoining lots or road;  
 \* Part of the building shown on this plan encroaches onto adjoining \* lots and road

.....  
 Cadastral Surveyor/Director\* Date

\*delete words not required

**7. Lodgement Fees :**

|                 |          |
|-----------------|----------|
| Survey Deposit  | \$ ..... |
| Lodgement       | \$ ..... |
| .....New Titles | \$ ..... |
| Photocopy       | \$ ..... |
| Postage         | \$ ..... |
| TOTAL           | \$ ..... |

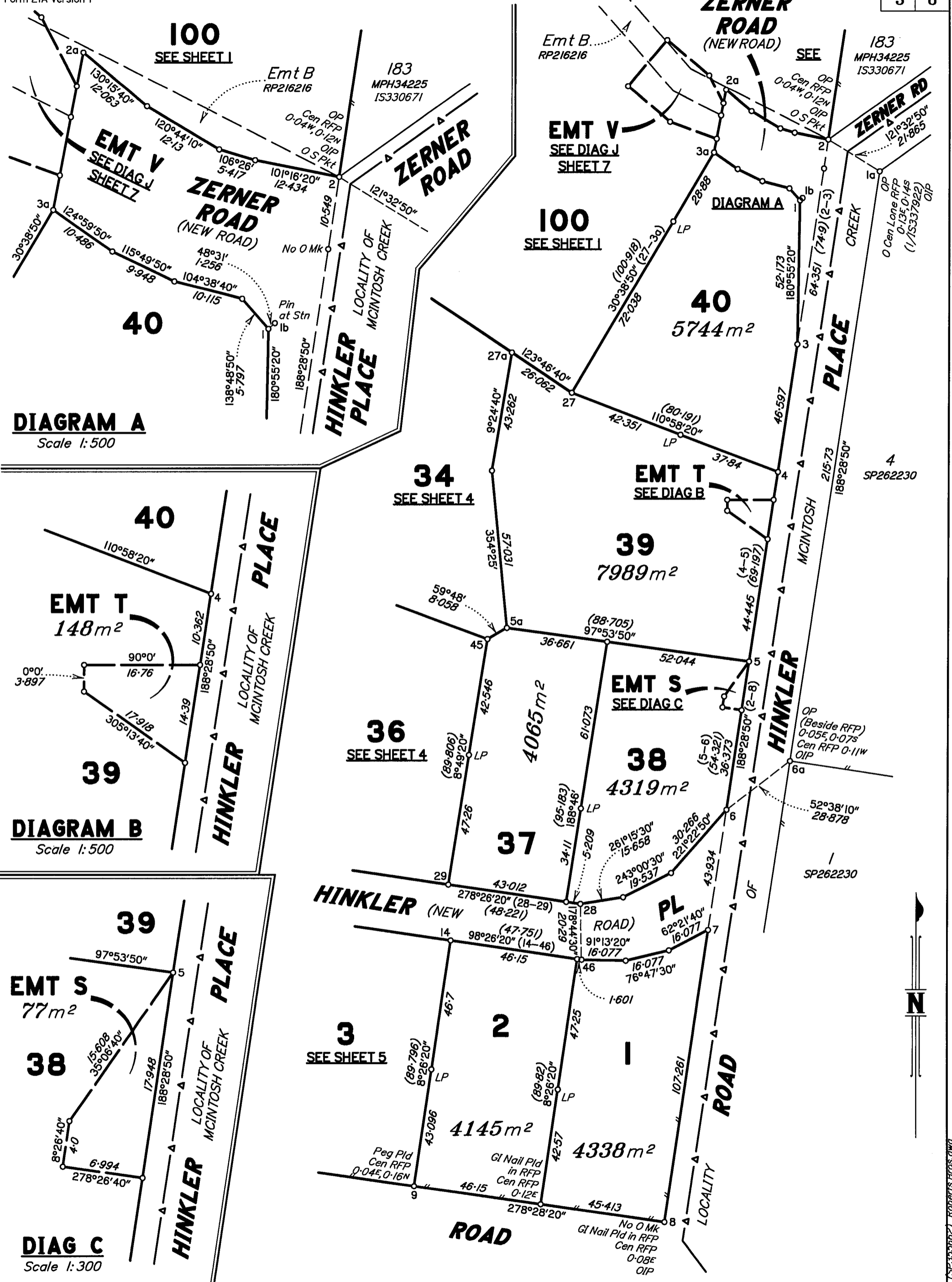
8. Insert Plan Number **SP355662**

|                   |        |
|-------------------|--------|
| 1-10, 31-40 & 100 | POR 95 |
| Lots              | Orig   |

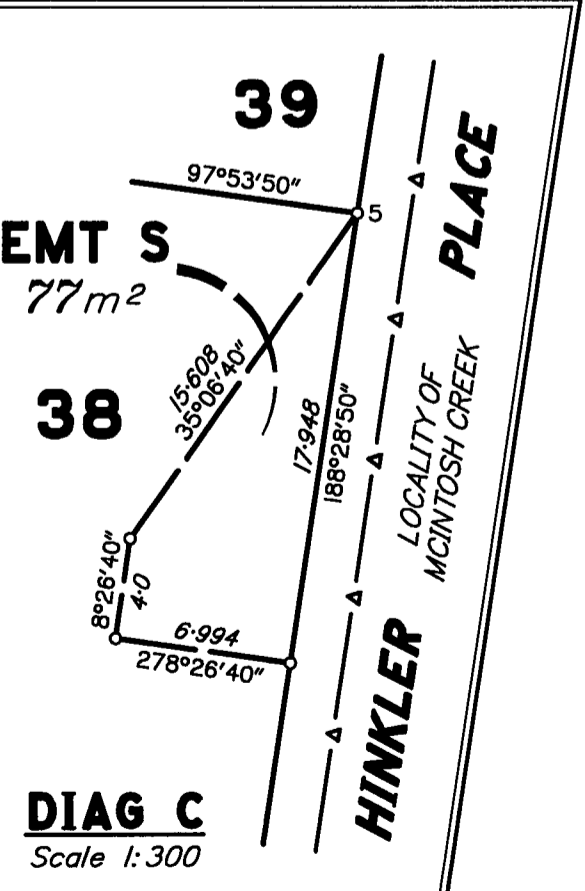
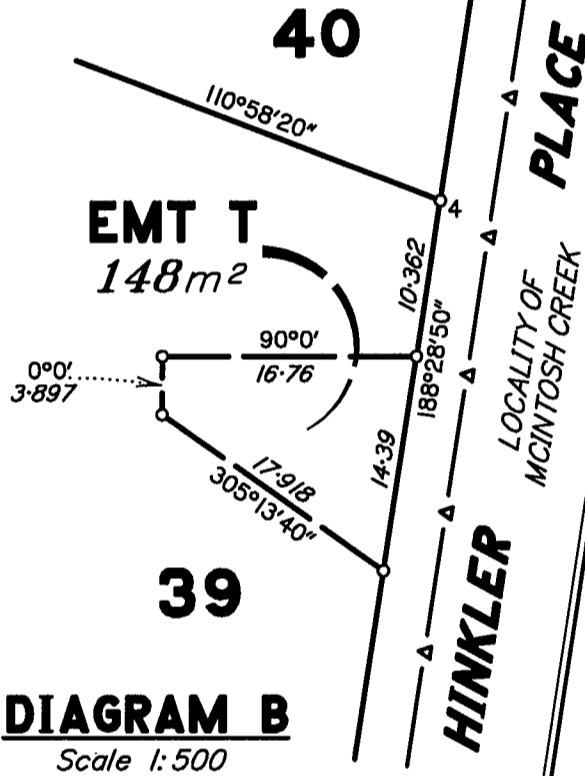
2. Orig Grant Allocation :

3. References :  
 Dept File :  
 Local Govt :  
 Surveyor : **62228**

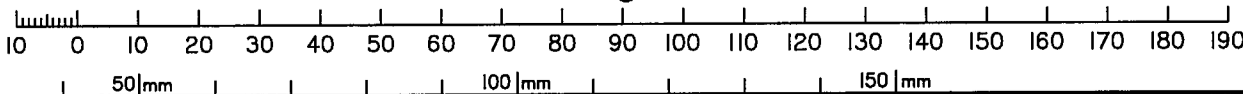
5. Passed & Endorsed :  
 By : I.K.Smith  
 Date : *4-11-25*  
 Signed : *[Signature]*  
 Designation : Cadastral Surveyor



**DIAGRAM A**  
Scale 1:500



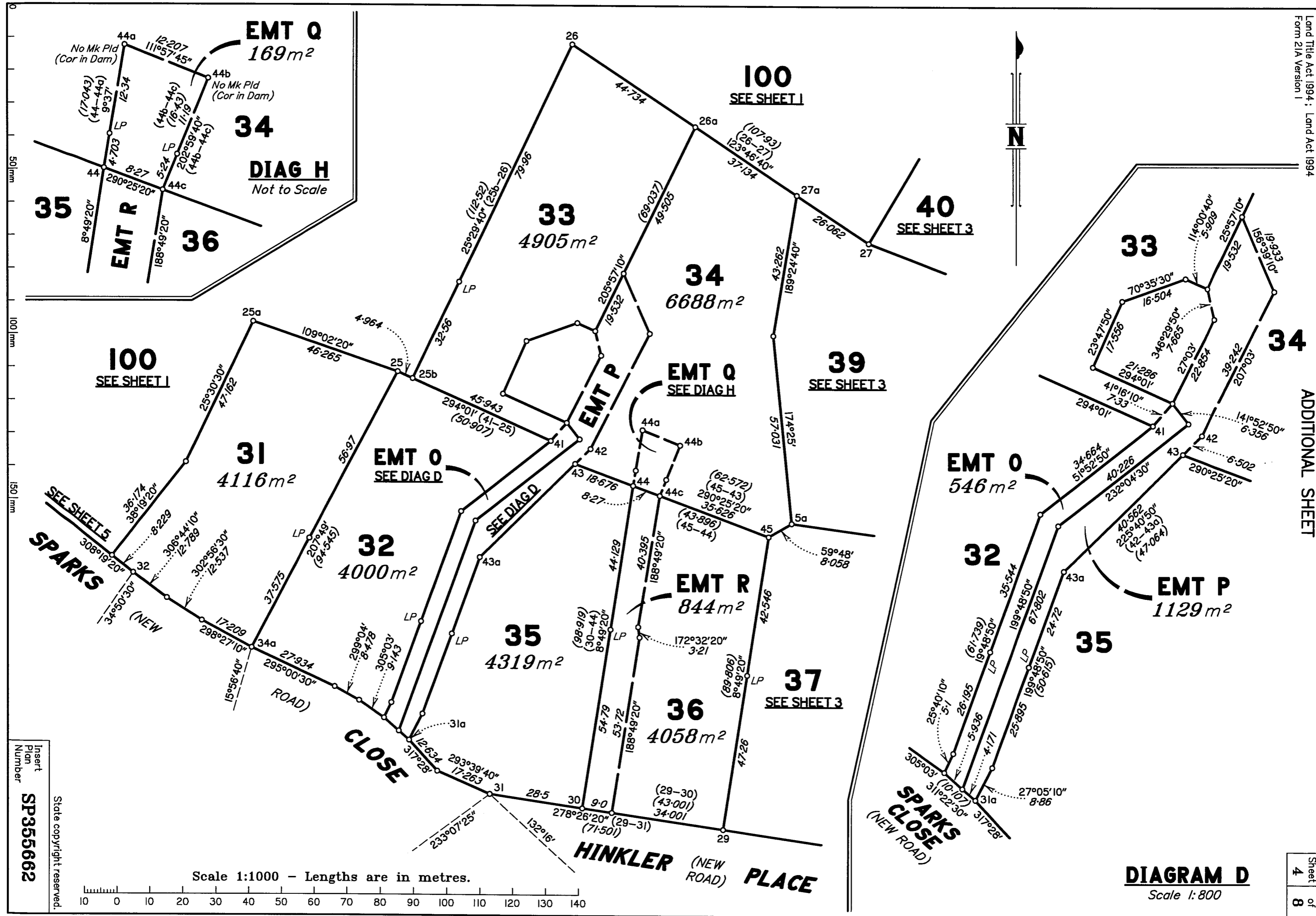
Scale 1:1250 - Lengths are in metres.



State copyright reserved.

Insert Plan Number **SP355662**

SP355662\_513330662\_Roberts Bros.dwg



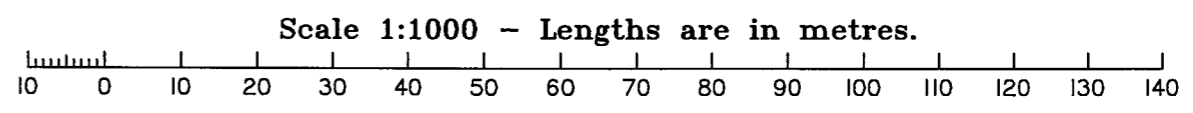
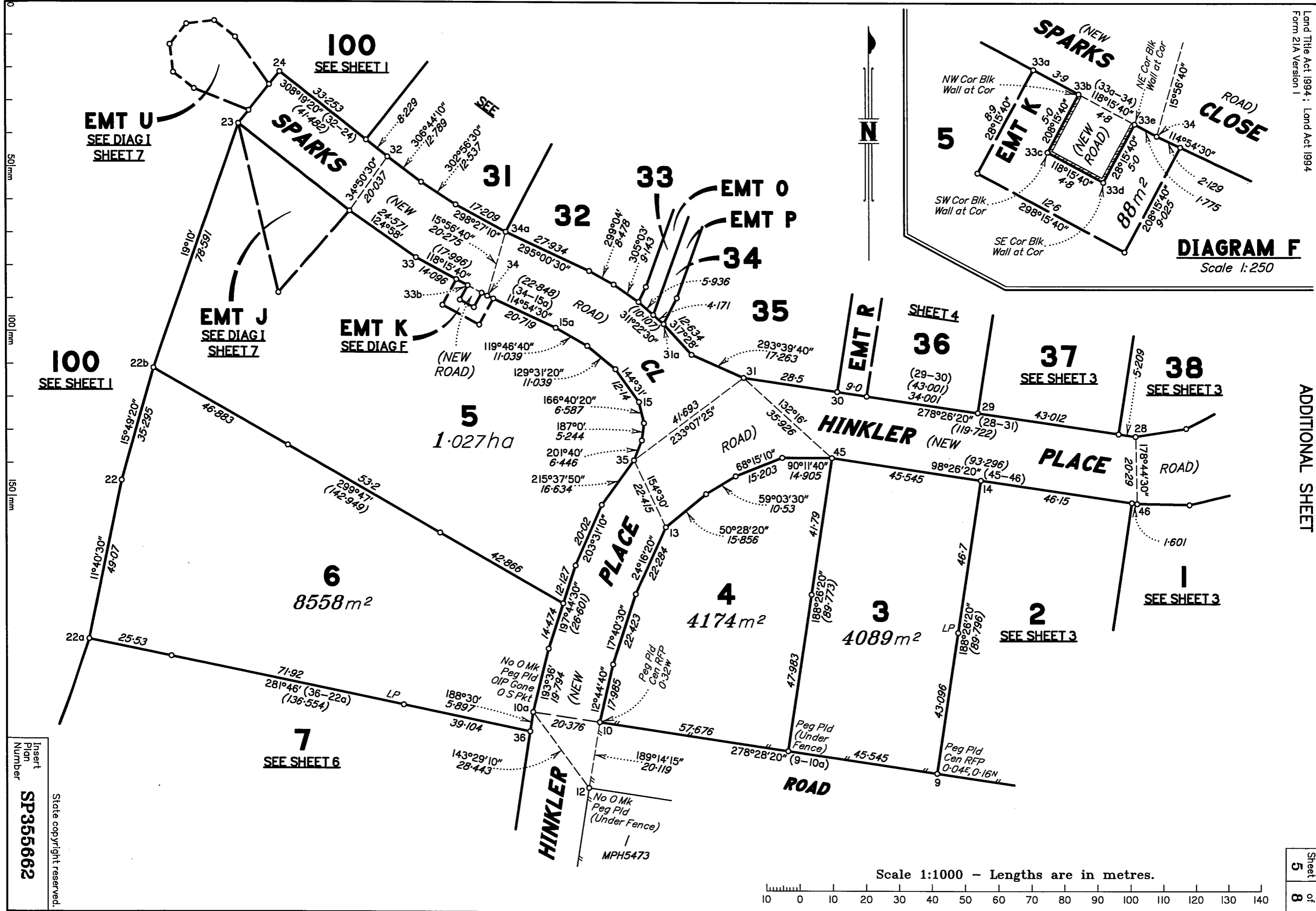
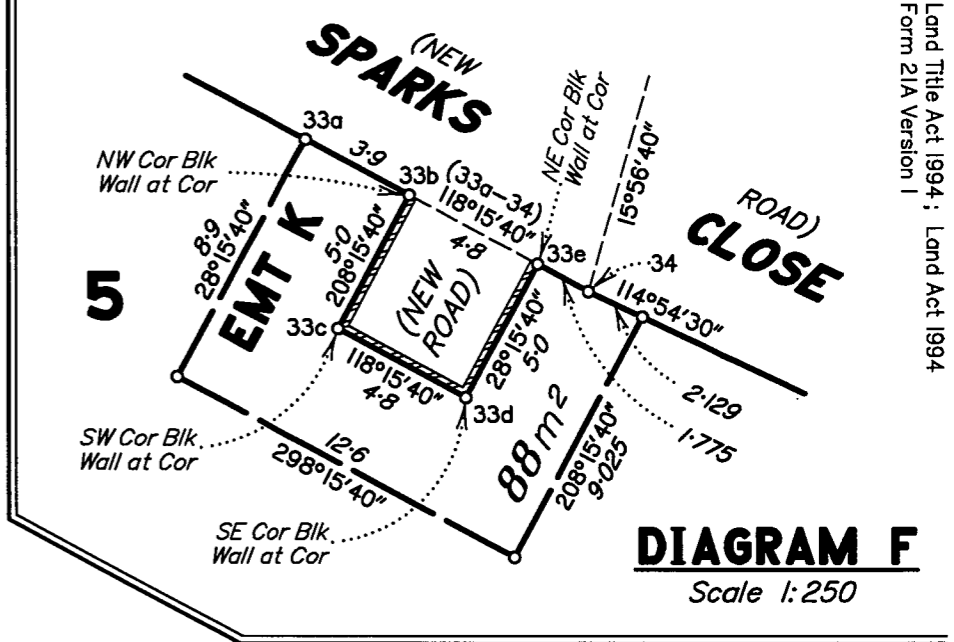
Scale 1:1000 - Lengths are in metres.

**DIAGRAM D**

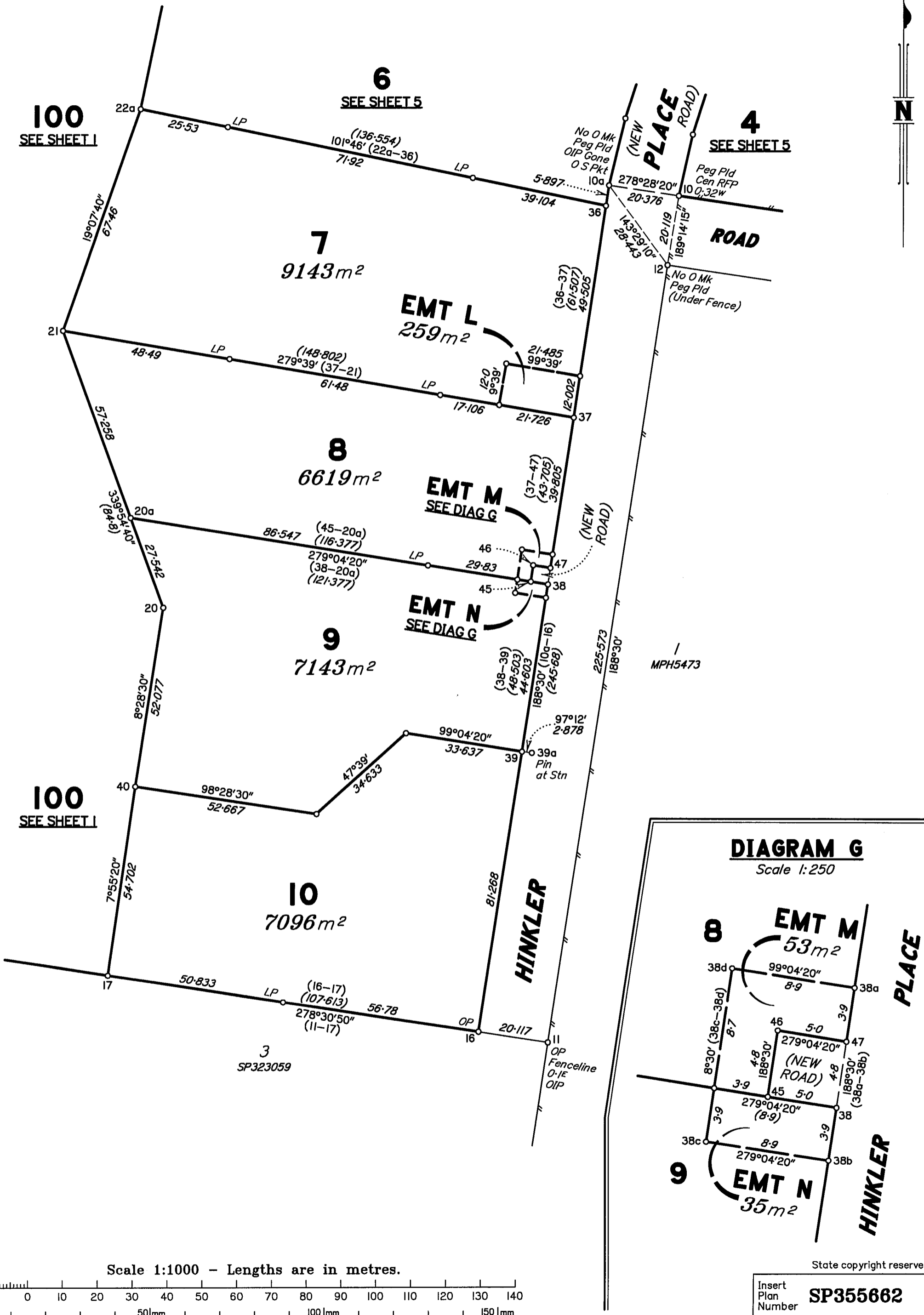
Scale 1:800

Insert  
Plan  
Number  
**SP355662**

State copyright reserved.



Insert Plan Number  
**SP355662**  
State copyright reserved.



A:\H 62228 (SP355662)\_Roberts Bros.dwg



M.G.A. COORDINATES GDA-2020

| STATION | EASTING     | NORTHING      | ZONE | P.U.  | LINEAGE | METHOD | REMARKS |
|---------|-------------|---------------|------|-------|---------|--------|---------|
| 1b      | 464 091.82  | 7 097 299.956 | 56   | 0-016 | Derived | AusPos | Pin     |
| 39a     | 463 808.516 | 7 096 798.085 | 56   | 0-016 | Derived | AusPos | Pin     |

PERMANENT MARKS

| PM    | ORIGIN | BEARING | DIST  | NO     | TYPE         |
|-------|--------|---------|-------|--------|--------------|
| 15-PM |        | 150°44' | 9.656 | 214944 | Brass Plaque |

REFERENCE MARKS

| STN | TO                 | ORIGIN      | BEARING    | DIST   |
|-----|--------------------|-------------|------------|--------|
| 1   | Screw in Kb        |             | 65°45'     | 4.04   |
| 1a  | OIP                | 1/1S337922  | 56°55'50"  | 0.954  |
| 1a  | Screw in Kb        |             | 270°04'20" | 6.998  |
| 1b  | Pin                |             | at Station |        |
| 2   | OIP                | 6/MPH32344  | 28°39'50"  | 1.0    |
| 2   | Screw in Kb        |             | 173°32'30" | 3.112  |
| 2   | O S Pkt            | 3/1S330671  | 344°50'20" | 5.165  |
| 2a  | Screw in Kb        |             | 201°17'50" | 6.387  |
| 3   | Screw in Kb        |             | 104°06'20" | 5.684  |
| 3a  | Screw in Kb        |             | 37°51'     | 6.128  |
| 4   | Pin                |             | 102°18'    | 1.568  |
| 5   | Pin                |             | 97°35'     | 0.928  |
| 5a  | Pin                |             | 74°16'     | 1.675  |
| 6   | Pin                |             | 106°24'    | 0.91   |
| 6a  | OIP                | 11/SP262230 | 143°30'30" | 2.366  |
| 7   | Pin                |             | 23°20'     | 0.89   |
| 8   | OIP                | 1/RP74559   | 98°28'50"  | 1.267  |
| 9   | Pin                |             | 341°44'    | 3.377  |
| 10  | Pin                |             | 326°49'    | 1.335  |
| 10a | OIP Gone           | 2/RP74559   | 8°30'      | 0.805  |
| 10a | O S Pkt            | 1/SP355662  | 44°22'50"  | 36.453 |
| 11  | OIP                | 2/SP323059  | 252°10'    | 1.292  |
| 12  | S Pkt              |             | 205°50'    | 1.887  |
| 13  | Pin                |             | 259°54'    | 1.34   |
| 15  | Screw in Kb        |             | 56°05'30"  | 4.91   |
| 16  | Pin                |             | 140°41'    | 1.807  |
| 17  | Pin                |             | 301°08'    | 1.201  |
| 18  | OIP Distd          | 20/RP216216 | 194°35'    | 1.88   |
| 19  | OIP                | 22/RP216216 | 98°42'     | 1.273  |
| 20a | Pin                |             | 231°42'    | 1.502  |
| 21  | Pin                |             | 310°53'    | 1.057  |
| 22a | Pin                |             | 342°36'    | 0.91   |
| 22b | Pin                |             | 307°05'    | 0.903  |
| 23  | Pin                |             | 38°48'     | 0.958  |
| 23  | Screw in Kb        |             | 56°23'40"  | 7.22   |
| 24  | Screw in Kb        |             | 205°32'30" | 7.053  |
| 25  | Pin                |             | 328°09'    | 1.427  |
| 25a | Pin                |             | 24°14'     | 0.837  |
| 26  | Pin                |             | 24°05'     | 1.055  |
| 27  | Pin                |             | 349°25'    | 2.29   |
| 28  | Pin                |             | 271°33'20" | 5.267  |
| 31  | Pin                |             | 190°45'    | 0.994  |
| 31  | Screw in Kb        |             | 197°14'40" | 9.23   |
| 31a | Screw in Conc Dway |             | 249°43'    | 5.938  |
| 34  | Screw in Kb        |             | 24°21'50"  | 6.512  |
| 34a | Screw in Kb        |             | 203°19'40" | 6.548  |
| 35  | Screw in Kb        |             | 132°0'     | 3.943  |
| 38  | Pin                |             | 97°32'     | 1.523  |
| 39a | Pin                |             | at Station |        |
| 40  | Pin                |             | 272°02'30" | 0.828  |
| 41  | Pin                |             | 13°42'     | 1.522  |
| 43  | Pin                |             | 65°43'     | 1.75   |
| 45  | Pin                |             | 3°32'      | 0.873  |
| 46  | Pin                |             | 3°34'      | 0.9    |